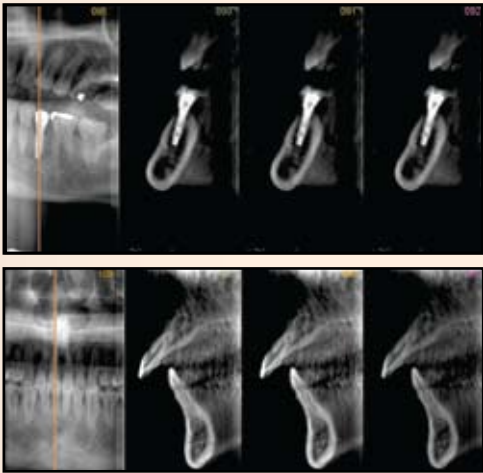


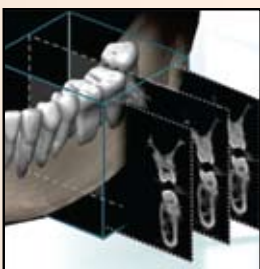
PAPAYA with Cubical Semi tomography (CUST) provides accurate tomographic Cross Sectional information for Diagnosis, Implant planning & follow-up of implants. It can also be used for accurate measurement of dimension of lesions & planning of surgical procedures.



- ✦ When planning the implant, CUST image helps understanding the Jaw structures with sectional images.
- ✦ CUST image is economical compared to expensive CBCT scan.

Specifications -

- ✦ Panoramic Imaging
- ✦ Cubical Semi - Tomography Imaging
- ✦ Variable focal trough
- ✦ User Friendly
- ✦ Latest Face to face positioning
- ✦ Fit each individual's jaw shape
- ✦ Voice support system
- ✦ Wheelchair accessible
- ✦ Self standing



Panoramic with Cross Section Projection



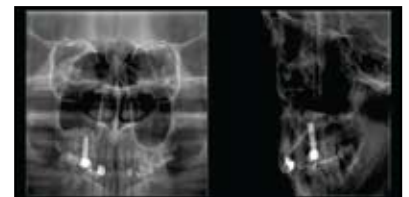
PAPAYA

Now with

- Cubical Semi Tomography
- Advanced CMOS Sensor
- Face to Face Positioning
- With Floor Stand



Panoramic Image



Sinus Image PA & Lat.

Exposure Programs-

Standard Panoramic | Orthogonal | Bitewing | Bitewing Right | Bitewing Left | Child Orthogonal | TMJ Lateral | TMJ Lateral Double | Segmentation | TMJ PA | TMJ PA Double | TMJ Lat. PA | TMJ Lat. PA Double | Sinus Lateral | Sinus Lateral Mid, Sinus PA | Child, Female, Male & Athlete |

Scout Image	
Exposure Time	5 sec
Exposure Values	66-76 kV/6-10 mA
Projection Image	
No. of Projection images	10
Scan Time	1min 20sec
Exposure Time	3 sec / projection, 30 sec totally
Exposure Values	66-85 kV/6-10 mA
Reconstruction (Cross-sectional) image	
Field of View	50x50x103mm/256x256x530 voxels
Voxel Size	0.195mm
Measurement Error	< 1 mm
Reconstruction Time	< 1 min (GTX650)