



5-Axis Dental Mill

**DWX-520**

# DWX-52D

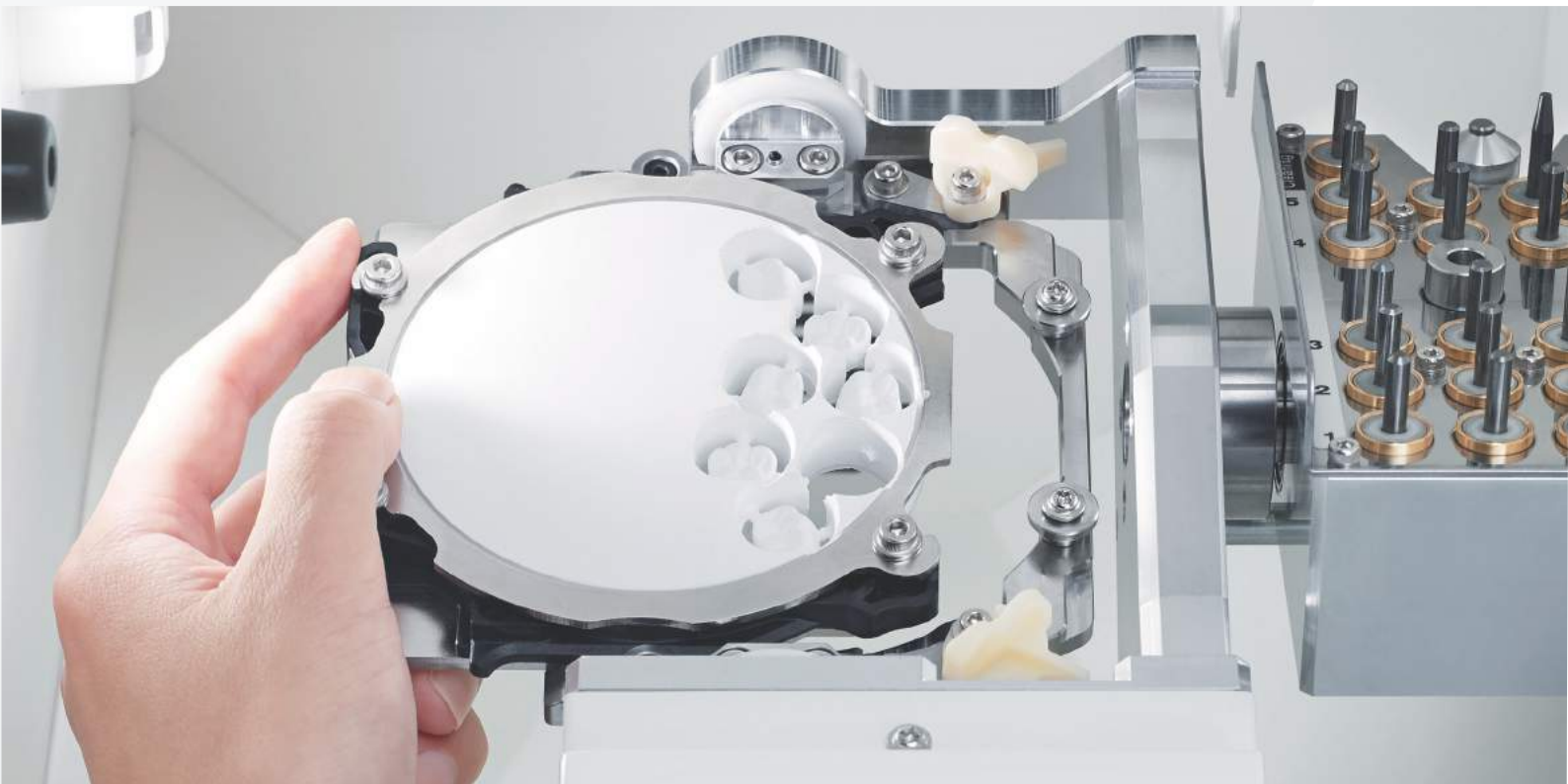
## Precision Performer and Efficiency Expert

Introducing the New DWX-52D 5-Axis Dental Mill for Maximum Efficiency & Production

Capable of producing a wide range of restorations, including crowns, coping bridges, inlays and onlays, veneers abutments, implant bars, screw-retained crowns, digital dentures, models surgical guides and bite splints, the DWX-52D 5-axis dental mill offers a highly reliable, precise, easy-to-use and affordable solution. New features include upgraded disc handling, increased material capabilities, improved tool management and other enhanced capabilities to make your lab more efficient and productive

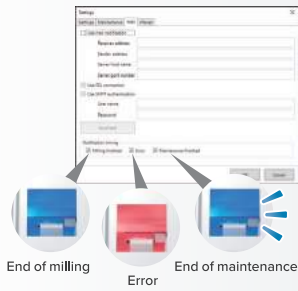
### New Clamping System

A new snap-on clamp system with 6 included adapters for 98.5mm discs offer fast and secure set-up of zirconia, wax, PMMA, gypsum, PEEK, glass fiber-reinforced resin, composite resin and CoCr sinter metal materials. A pin-type material adapter enables setting up and milling eight pin-type blocks consecutively.



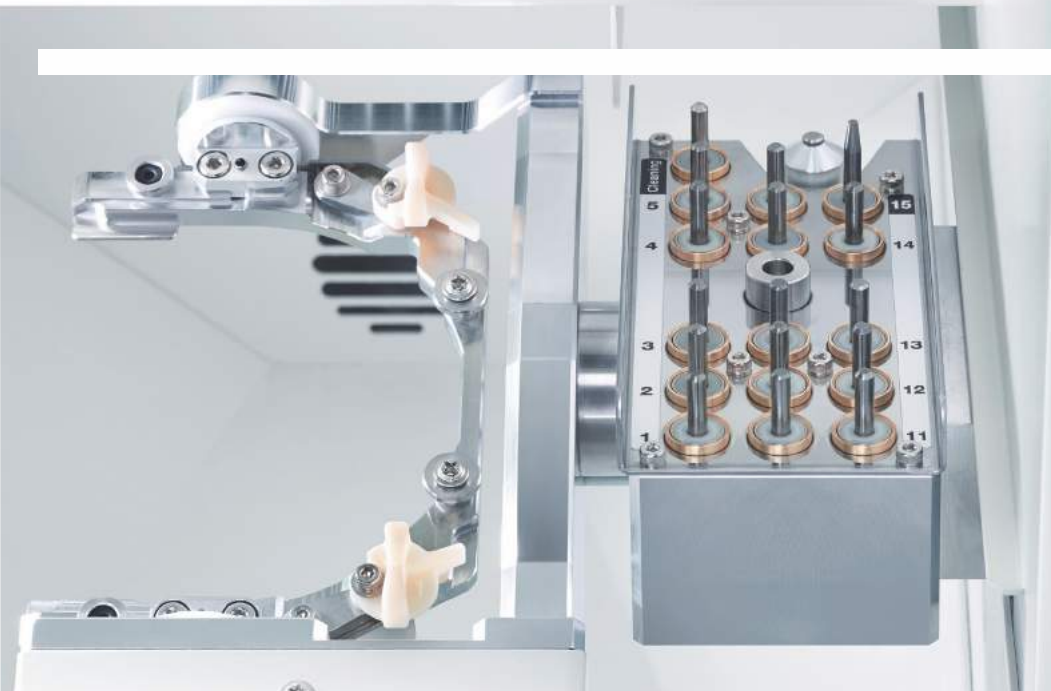
## User-friendly Design

A user-friendly Virtual Machine Panel (Vpanel) enables convenient production and device monitoring from your computer.



## 15-Station Automatic Tool Changer (ATC)

The DWX-52D provides continuous, unattended milling with a **15-station Automatic Tool Changer (ATC)** and includes dedicated slot for an included cleaning too.



## Adaptor Rack for Increased Efficiency

6 adapters for 98.5mm material discs are included as standard with the DWX- 52D allowing you to queue up multiple milling jobs for efficient job management. An optional disc adapter rack is also available





5-Axis Dental Mill

**DWX-52D**

## Specifications

<b>Millable Material</b>	Zirconia, Wax, PMMA, Composite resin, PEEK, Gypsum, Glass fiber reinforced resin, CoCr sinter mental	
<b>Loadable Workpiece shape</b>	Disc-type (with step)	Step section : 98.5 mm (3.88 in) (diameter), height 10 mm (0.39 in)
		Body section : 95 mm (3.74 in) (diameter), height max. 60 mm (2.36in)
	Pin-type	Pin diameter : 6 mm(0.24 in)
<b>Operating speed</b>	XYZ axis: 6 to 1,800 mm/min. (0.24 to 70.9 in/min)	
<b>Spindle motor</b>	Brushless DC Motor	
<b>Spindle rotating speed</b>	6,000 to 30,000 rpm	
<b>Rotary axis travel angle</b>	A : $\pm 360^{\circ}$ , B: $\pm 30^{\circ}$	
<b>Number of milling burs housed</b>	15	
<b>Attachable milling bur</b>	Shank diameter: 4 mm (0.16in), Length: 40 to 55mm (1.57 to 2.17 in.)	
<b>Compatible compressed air</b>	0.02 to 0.2 Mpa	
<b>Control command set</b>	RML-1, NC Code	
<b>Interface</b>	USB	
<b>Power requirements</b>	AC 100 V to 240 V $\pm 10\%$ , 50/60Hz (overvoltage category II, IEC60664-1), 2.0 A	
<b>Power consumption</b>	Aprox. 200 W	
<b>Operating noise</b>	During operation : 70 dB (A) or less (when not cutting), During standby : 45 dB (A) or less	
<b>External dimensions</b>	Width X Depth X Height: 495 X 660 X 600 mm (19.5 X 26.0 X 23.6 in)	
<b>Weight</b>	67 KG (147.7 lbs.)	
<b>Installation environment</b>	Indoor use, Altitude: Up to 2,000 m (6,562 ft.), Temperature : 5 to 40°C (41 to 104°F), Humidity : 35 to 80 % (no condensation), Ambient pollution degree : 2 (as specified by IEC 60664-1), Short-term temporary over voltage : 1,440 V, Long-term temporary over voltage : 490 V	