

Compact Outside - Smart Inside



PORT-X II

- ✦ Portable, compact & wireless DC X-Ray
- ✦ 60kV/2mA Toshiba Tube
- ✦ Focal Spot 0.8 mm
- ✦ Exposure Time (0.01-2.0 sec)
- ✦ Graphic LCD display
- ✦ IOPA film & Radiovisiography sensor compatible
- ✦ Round type beam limiting device
- ✦ Total filtration 1.8 mmAl
- ✦ 60-70 X-Ray shots on film or 90 to 100 X-Ray shots on Sensor once battery is recharged
- ✦ Weight approx. 3 Kg
- ✦ Electrical Voltage 220 V
- ✦ Internally LEAD coated to prevent excessive exposure & dispersion of radiation
- ✦ Rechargeable Lithium-Polymer battery
- ✦ Patient & tooth selection mode
- ✦ Very useful for multi-chair clinics

**Digital Sensor 0.15 sec
Chemical Film 0.3 sec**



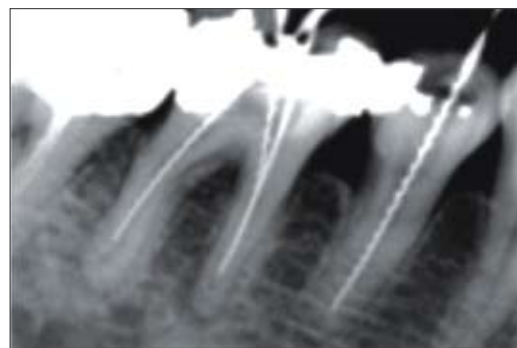
Canine

**Digital Sensor 0.15 sec
Chemical Film 0.3 sec**



Incisor

**Digital Sensor 0.25 sec
Chemical Film 0.35 sec**



Molar