

MoonRay DLP 3D Printer

Revitalizing the workflows of dental clinicians



MoonRay ushers in a new era of digital dentistry. It is precise and fast, simple and powerful, technologically advanced and durable.



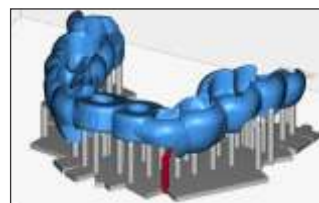
Million Pixels.
Brilliant Reality.
Advanced DLP projector



Powerful yet easy to use software



Incredibly Durable Resin
Tank upto 50 liters
extended life time



Take Control,
Generate and Edit
Supports

Technical Specifications

Print Volume : 130 x 80 x 200 mm	Layer thickness : 20, 50 & 100 Microns
Print Speed : 1 in/hour @ 100 Microns	Wifi Connectivity

Strategic Partner

UNICORN DenMart 
Behind The Best Indian Dentists